

Rochester Skatepark

Conceptual Design



Context Map

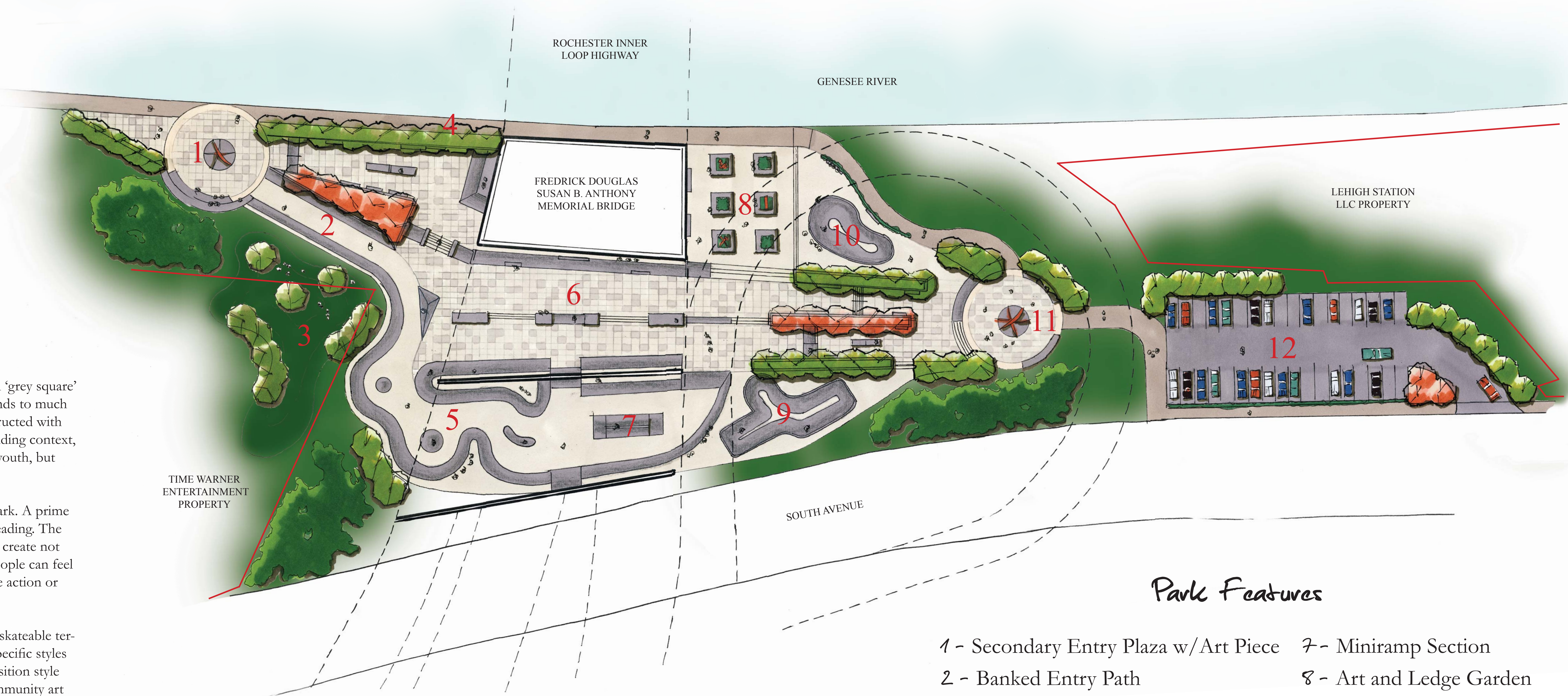


Vision

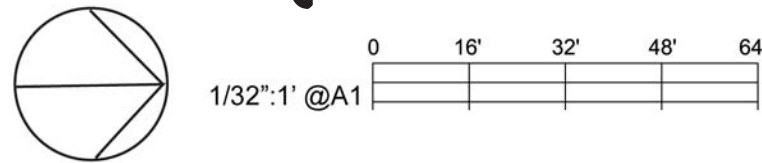
Skateparks are changing. The days of the stereotypical ‘grey square’ have long passed as a new era of facility design responds to much more than purely function. When designed and constructed with strong community input and sensitivity to the surrounding context, skateparks not only become beloved destinations for youth, but truly celebrated public spaces for everyone to enjoy.

Outlined above is the vision for the Rochester Skatepark. A prime example of where the future of skatepark design is heading. The designs massive footprint provides the opportunity to create not only a youth park, but a youth district where young people can feel safe and welcome whether they are participating in the action or simply spectating.

Within the Rochester Skatepark footprint world-class skateable terrain is divided into different spaces that cater to the specific styles of skateboarding whether that be street, bowl, or transition style riding. These distinct spaces are complimented by community art and sculpture and inviting viewing/socializing areas that flow and mesh with one another as well as the surrounding site. This creates a unified overall design that links and enhances the surrounding community and provides a welcoming space for users and spectators alike. The Rochester Skatepark has the potential to not only become a destination within the city of Rochester, but a destination for people worldwide.



Skatepark Plan



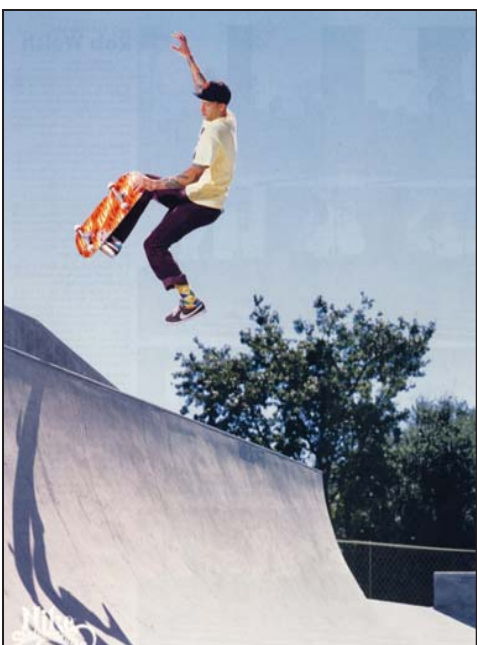
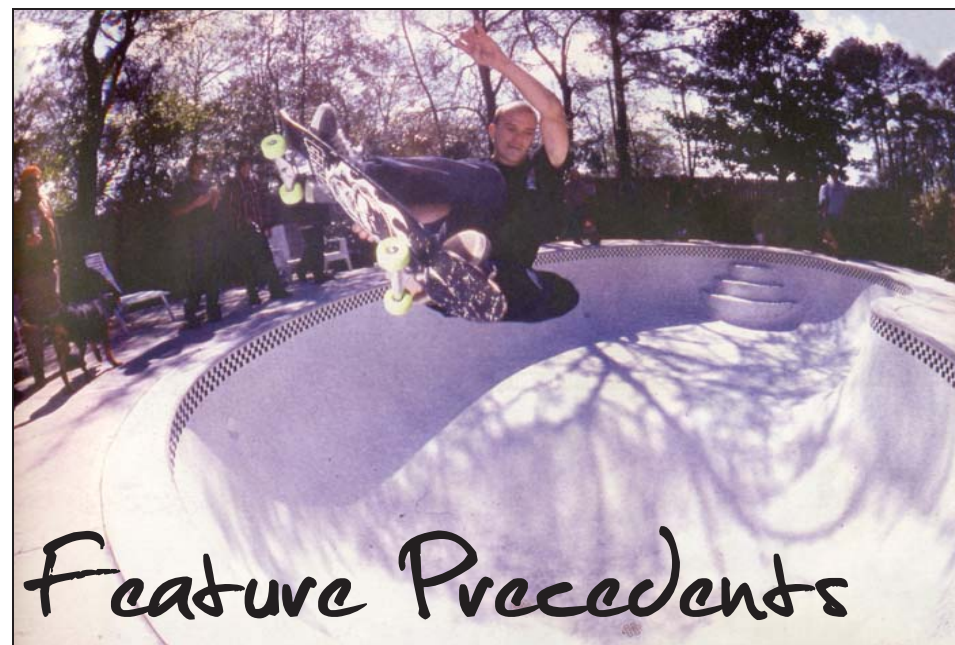
Park Features

- 1 - Secondary Entry Plaza w/ Art Piece
- 2 - Banked Entry Path
- 3 - Berm Seating/Picnic Area
- 4 - Pedestrian Walkway/Artwalk
- 5 - Flow Section
- 6 - Main Skate Promenade
- 7 - Miniramp Section
- 8 - Art and Ledge Garden
- 9 - Combi-Bowl
- 10 - Pool-Style Bowl
- 11 - Main Entry w/ Art Piece
- 12 - Parking



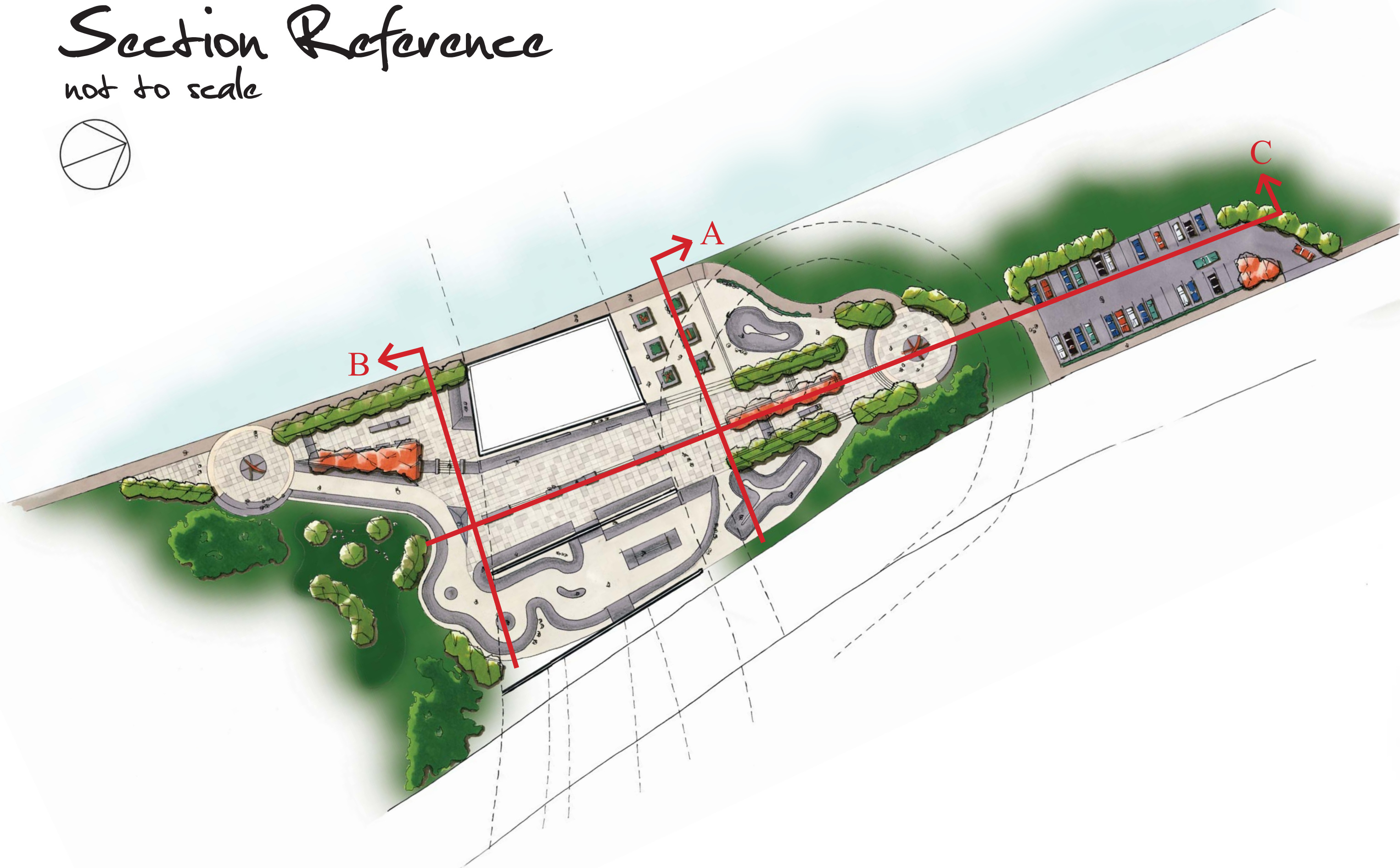
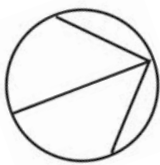
Rochester Skatepark

Conceptual Design



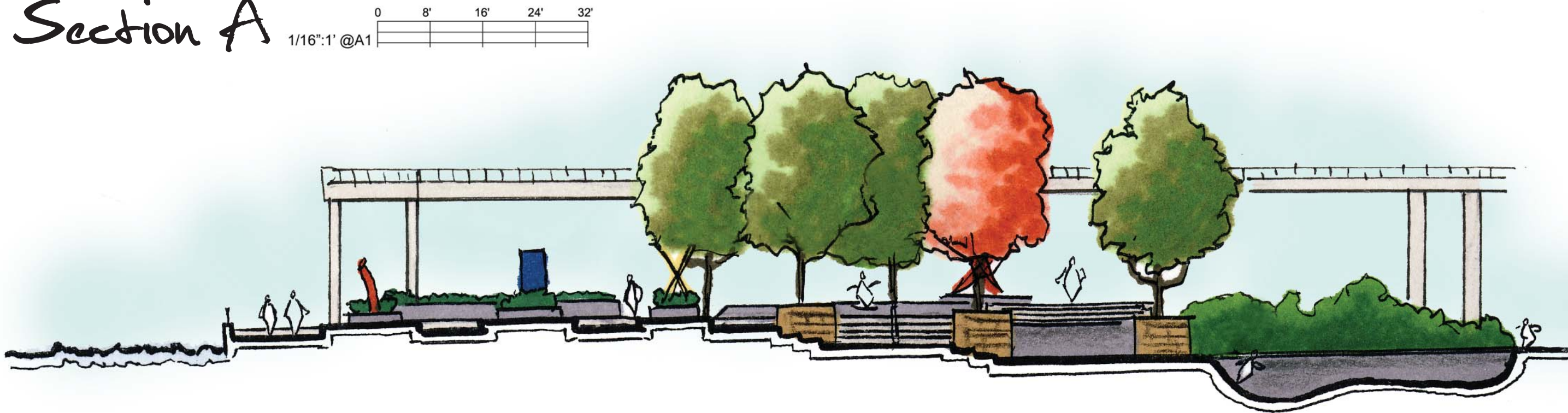
Section Reference

not to scale



Section A

1/16"=1' @A1



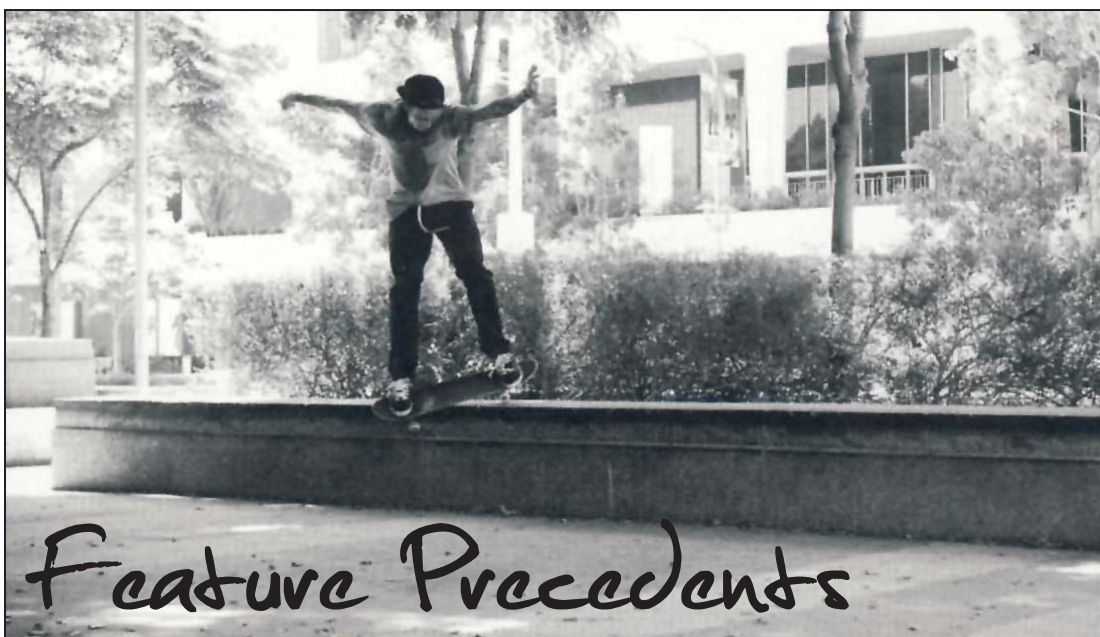
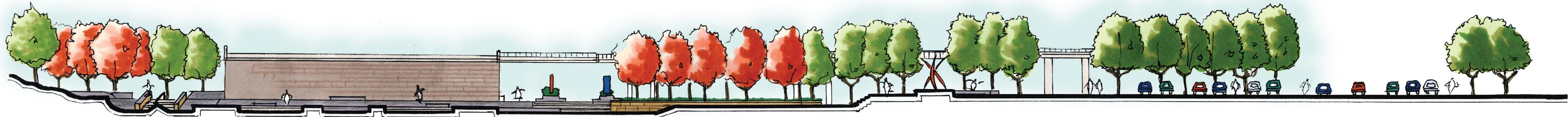
Section B

1/16"=1' @A1



Section C

1/32"=1' @A1



Rochester, NY
July, 2009
www.newlineskateparks.com
www.vdz.ca

